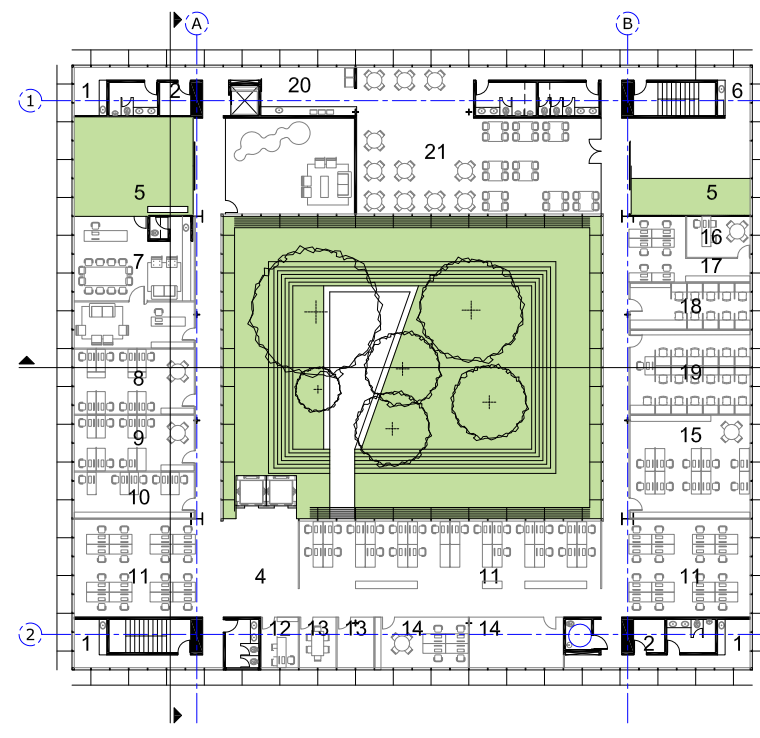
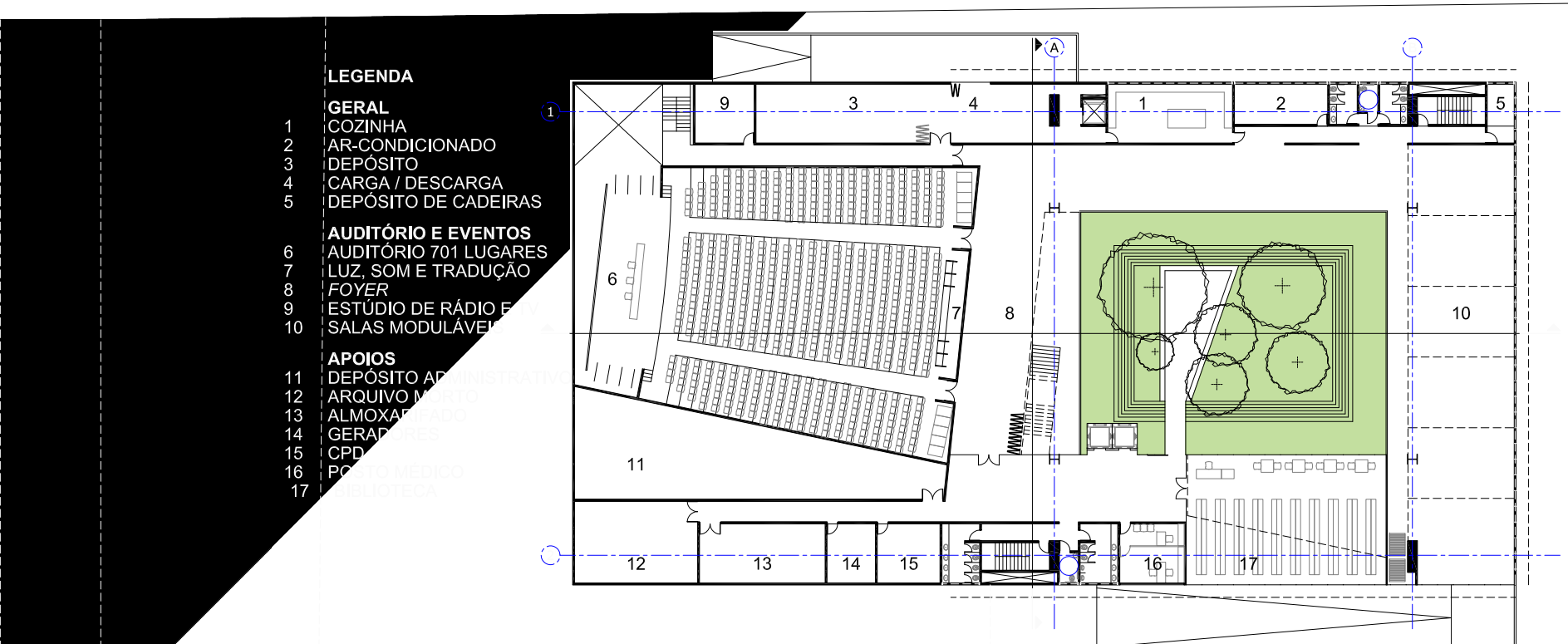


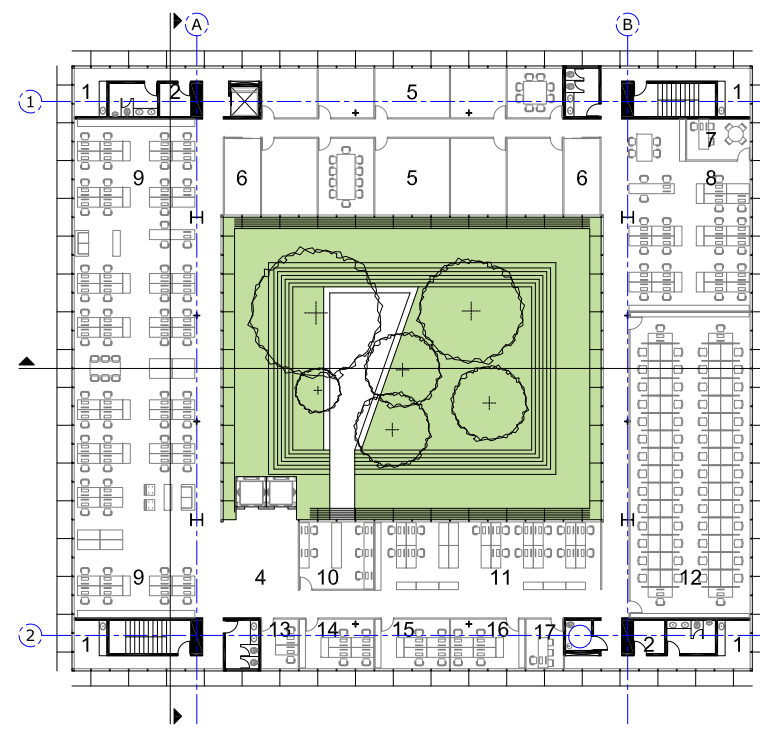
N 203,38 m² 1/500
 5 10 20 40
PLANTA DO TÉRREO . NÍVEL -1,20



N 1148,60 m² 1/500
 5 10 20 40
PLANTA DO PAVIMENTO 2 . NÍVEL 5,80



N 2407,58 m² 1/500
 5 10 20 40
PLANTA DO SUBSOLO 1. NÍVEL -4,35



N 1249,09 m² 1/500
 5 10 20 40
PLANTA DO PAVIMENTO 1. NÍVEL 2,30